

The Blundstone logo, featuring the brand name in a white, stylized script font with a green swoosh underneath, set against a dark blue rectangular background.

Blundstone®

TASMANIA AUSTRALIA 1870

A full-page background image showing the lower half of a person standing on a paved surface. They are wearing dark blue denim jeans with the hems rolled up, revealing brown leather lace-up boots. The background is a blurred urban setting.

2025-2026 COLLECTION

V1



LOOK BOOK



Our History

For over 150 years we've been a company always on the go, always evolving. It's been that way since John Blundstone started making fit-for-purpose footwear that would withstand the cobbled city streets, rugged farmland, dance and factory floors of Hobart, Tasmania, in 1870.

Over the years, our business has evolved just like our island home, but our ethos remains the same. Our commitment to quality and innovation has endured the Great Depression, both world wars, and an ever-changing fashion landscape - from the swinging '60s to '90s grunge to festival fashion in the 2000s.

We've put our boots on Aussie soldiers, Everest expeditioners, footballers, factory workers, farmers and police men and women. We've inspired artists, musicians, chefs, tap dancers, and Olympic athletes to put their best foot forward. Our range of kids' boots has inspired a new generation of Blundstone wearers to jump puddles on rainy afternoons.

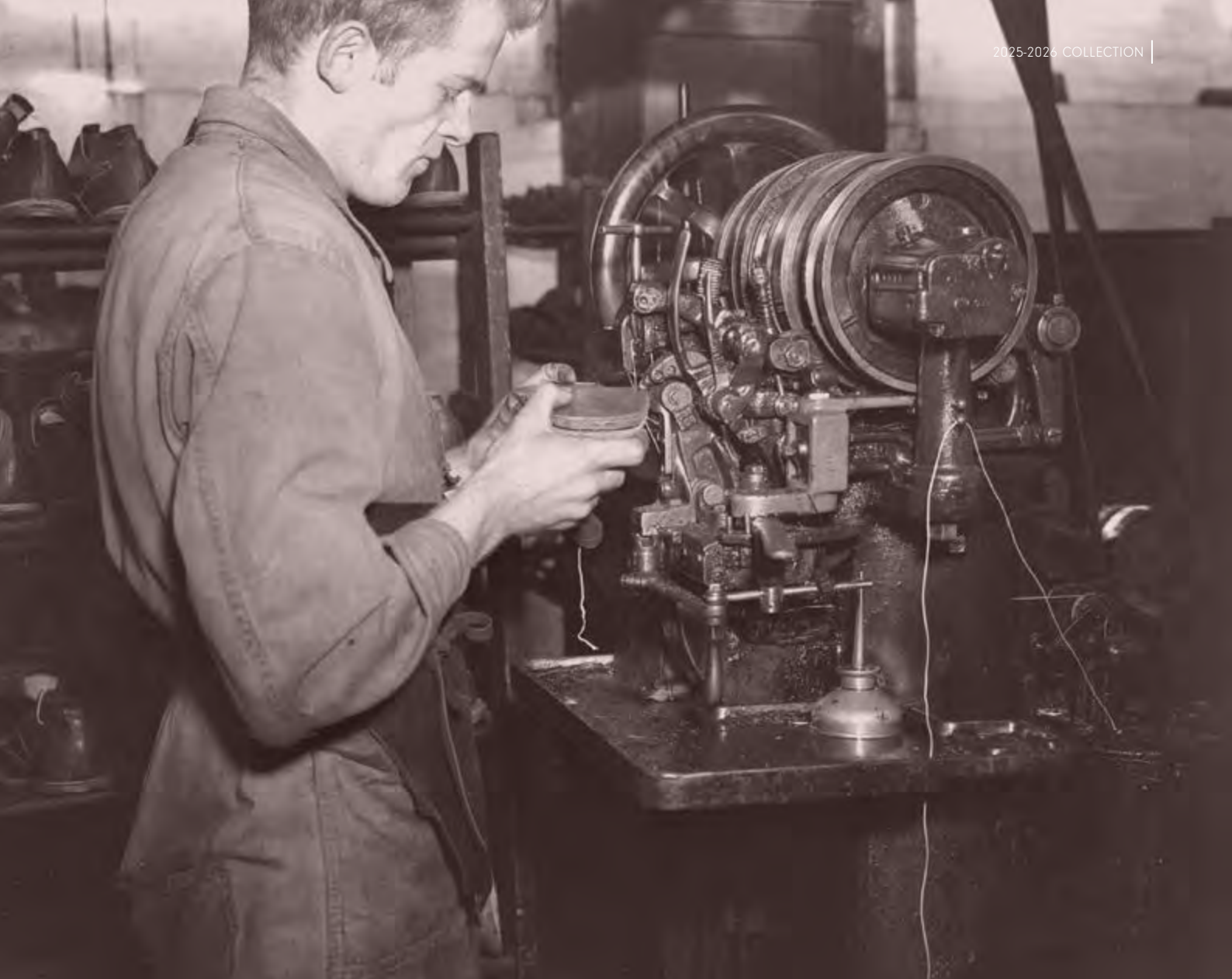


Led by design

Since 1870, Blundstone has been making tough, quality boots that are equally suited to work or play.

Decades of innovative design and production mean Blundstone now oversees a global supply chain, bringing together the best ideas, materials and designs to create a wide range of products for everywhere life takes you.

Our ongoing research and development means we're always improving comfort, protection, performance and aesthetics.



QUALITY

When we started making boots in the 1800s, we were dedicated to crafting a quality product. That's still our commitment to you today. Our company is quality endorsed to ISO 9001:2015, and every part of the production process helps ensure that when you put on a pair of Blundstones, you're wearing some of the best boots in the world.

MANUFACTURING

We manufacture our leather footwear in Vietnam, India, Thailand, Mexico and China. These factories are premium-quality operations that are environmentally and socially responsible. The jobs in these factories are highly sought after, and we engage our personnel to ensure the standard of manufacturing is consistent with our stringent quality requirements. Our gumboots are manufactured at our headquarters in Tasmania.

ENVIRONMENT

We're committed to sustainable purchasing and manufacturing policies, each evaluated with environmental considerations in mind. We maximise our use of recycled and recyclable materials in our manufacture and packaging.

COMFORT

Blundstone is a pioneer in enhancing comfort and safety. In 1999, we developed the patented Shock Protection System (SPS) which reduces fatigue and orthopaedic problems in the lower back, legs and feet. Since then, we've taken it to the next level with the SPS MAX comfort system, which includes XRD[®] Extreme Impact Protection — a lightweight, thin and breathable cushioning material that's specially engineered to provide a greater level of underfoot comfort.



ORIGINALS

Our Originals Series styles are suited to everyone - whether it's for work, play or looking good.

For 25/26 we've added multiple new colourways and leather finishes as well as introducing a new high lace-up offering to the Series.



LIFESTYLE **ORIGINALS**#**2530**

RUSTIC BLACK

NEW

The #2530 8-inch lace-ups are a comfortable and stylish steel grey, with added height on the ankle and a hidden padded collar.

- Premium water-resistant waxed suede leather
- Unlined
- Washable Comfort Lite footbed
- Lightweight and heat-resistant TPU outsole
- Polyurethane midsole
- XRD® Technology in the heel for supreme shock absorption
- 6mm polyester laces
- Hidden padded collar
- New 210/220mm Height
- Thick cable stitching
- Toe cap
- Steel shank

UK SIZES

WOMEN / MEN

3 - 13**3.5 - 10.5**CATEGORY
SMULEAD TIME
16 WEEKS



LIFESTYLE **ORIGINALS**#**2532**

TOBACCO

NEW

Featuring a tobacco suede leather and thick cable stitching, the #2532 lace up is a boot with grit and personality.

- Premium water-resistant waxed suede leather
- Unlined
- Washable Comfort Lite footbed
- Lightweight and heat-resistant TPU outsole
- Polyurethane midsole
- XRD® Technology in the heel for supreme shock absorption
- 6mm polyester laces
- Hidden padded collar
- New 210/220mm Height
- Thick cable stitching
- Toe cap
- Steel shank

UK SIZES

WOMEN / MEN

3 - 13**3.5 - 10.5**CATEGORY
SMULEAD TIME
16 WEEKS

LIFESTYLE **ORIGINALS**#**2429**

CLAY

**Padded collar**

This is as natural finish colour/ material to reflect a pre-worn finish. This has light rub and scuff marks to reflect the pre-worn finish which is the key feature of this leather and not a defect.



The #2429 has that classic worn Blundstone look straight off the shelf with a light rub and scuff marks designed into premium clay leather.

- Premium water-resistant waxed nubuck leather
- Synthetic lining
- Washable Comfort Lite footbed
- Lightweight and heat resistant TPU outsole
- Polyurethane midsole
- XRD® Technology in the heel for supreme shock absorption
- Steel shank

UK SIZES

WOMEN / MEN

3 - 13**3.5 - 10.5**CATEGORY
SMULEAD TIME
16 WEEKS

LIFESTYLE **ORIGINALS**

#**2428**

BROWN



Padded collar



With a natural brown tone that signifies understated sophistication—the #2428 will have you feeling confident wherever life takes you.

- Premium water-resistant waxed full grain leather
- Synthetic lining
- Washable Comfort Lite footbed
- Lightweight and heat resistant TPU outsole
- Polyurethane midsole
- XRD® Technology in the heel for supreme shock absorption
- Steel shank

UK SIZES

WOMEN / MEN

3 - 13

3.5 - 10.5

CATEGORY
SMU

LEAD TIME
16 WEEKS



LIFESTYLE **ORIGINALS**#**2528**

CLARET

NEW

The #2528 rigger boot is not only good looking, it has a steel shank and XRD® Technology in the heel, providing supreme shock absorbtion and strength.

- Premium water-resistant oiled full grain leather
- Unlined
- Washable Comfort Lite footbed
- Lightweight and heat-resistant TPU outsole
- Polyurethane midsole
- XRD® Technology in the heel for supreme shock absorption
- Thick cable stitching
- Steel shank

UK SIZES

WOMEN / MEN

3 - 10**3.5 - 9.5**CATEGORY
SMULEAD TIME
16 WEEKS

LIFESTYLE **ORIGINALS**#**2527**

TEAK

NEW

Work wear origins but with a fashion forward focus, the new #2527 rigger boot is the perfect blend of grit and style.

- Premium water-resistant oiled and waxed nubuck leather
- Unlined
- Washable Comfort Lite footbed
- Lightweight and heat-resistant TPU outsole
- Polyurethane midsole
- XRD® Technology in the heel for supreme shock absorption
- Thick cable stitching
- Steel shank

UK SIZES

WOMEN / MEN

3 - 10**3.5 - 9.5**CATEGORY
SMULEAD TIME
16 WEEKS

LIFESTYLE ORIGINALS

#2503

NAVY

NEW



Oiled suede leather in navy gives the #2503 a timeless appeal.

- Premium water-resistant oiled suede leather
- Cambrelle lining
- Washable Comfort Lite footbed
- Lightweight and heat resistant TPU outsole
- Polyurethane midsole
- XRD® Technology in the heel for supreme shock absorption
- Steel shank

UK SIZES

WOMEN / MEN

3 - 13 3.5 - 10.5

CATEGORY
SMULEAD TIME
16 WEEKS



LIFESTYLE **ORIGINALS**#**2405****BLACK**

The #2405 has a water-resistant suede leather upper—the perfect balance of function and style.

- Premium water-resistant suede leather
- Cambrelle lining
- Iconic elastic side
- Washable Comfort Lite footbed
- Lightweight and heat resistant TPU outsole
- Polyurethane midsole
- XRD® Technology in the heel for supreme shock absorption
- Steel shank

UK SIZES

WOMEN / MEN

3 - 13 3.5 - 10.5CATEGORY
SMULEAD TIME
16 WEEKS

LIFESTYLE **ORIGINALS**#**2410****BROWN**

The #2410 in classic brown offers a versatile design, whilst continuing to deliver the comfort and durability you know and love in a Blundstone.

- Premium water-resistant suede leather
- Cambrelle lining
- Iconic elastic side
- Washable Comfort Lite footbed
- Lightweight and heat resistant TPU outsole
- Polyurethane midsole
- XRD® Technology in the heel for supreme shock absorption
- Steel shank

UK SIZES

WOMEN / MEN

3 - 13 3.5 - 10.5CATEGORY
SMULEAD TIME
16 WEEKS



LIFESTYLE **ORIGINALS**#**1615****DARK OLIVE**

Waxed suede leather has never looked so good in dark olive thanks to the #1615.

- Premium water-resistant waxed suede leather
- Cambrelle lining
- Contoured EVA footbed for maximum comfort
- Lightweight and heat resistant TPU outsole
- XRD® Technology in the heel for supreme shock absorption
- Steel shank

UK SIZES

WOMEN / MEN

3 - 13 3.5 - 10.5CATEGORY
CORELEAD TIME
8 WEEKS



LIFESTYLE **ORIGINALS**#**1910**STEEL GREY



With a waxed suede finish, the steel grey Blundstone #1910 is an unassuming but sophisticated twist on the Original #500 boot.

- Premium water-resistant waxed suede leather
- Cambrelle lining
- Contoured EVA footbed for maximum comfort
- Lightweight and heat resistant TPU outsole
- XRD® Technology in the heel for supreme shock absorption
- Steel shank

UK SIZES

WOMEN / MEN

3 - 13 3.5 - 10.5

CATEGORY
SMULEAD TIME
16 WEEKS

LIFESTYLE ORIGINALS

#1911

TOBACCO



With a rich tobacco hue, the #1911 combines modern elements like water repellent waxed suede with classic style.

- Premium water-resistant waxed suede leather
- Cambrelle lining
- Contoured EVA footbed for maximum comfort
- Lightweight and heat resistant TPU outsole
- XRD® Technology in the heel for supreme shock absorption
- Steel shank

UK SIZES

WOMEN / MEN

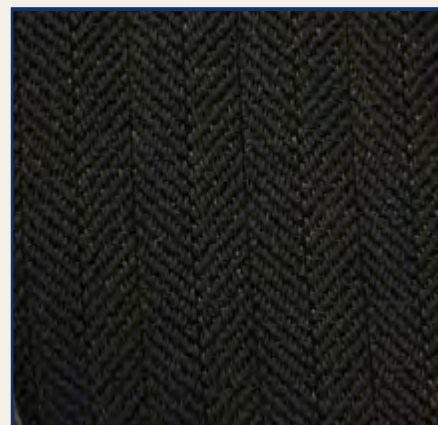
3 - 13 3.5 - 10.5

CATEGORY
SMULEAD TIME
16 WEEKS



LIFESTYLE **ORIGINALS**#**2403**

BROWN/MUSTARD HERRINGBONE



Herringbone elastic



It's in the details for the Originals #2403—featuring a brown and mustard herringbone elastic.

- Premium water-resistant full grain leather
- Unlined
- Iconic elastic side
- Washable Comfort Lite footbed
- Lightweight and heat resistant TPU outsole
- Polyurethane midsole
- XRD® Technology in the heel for supreme shock absorption
- Steel shank

UK SIZES

WOMEN / MEN

3 - 13 3.5 - 10.5CATEGORY
SMULEAD TIME
16 WEEKS



LIFESTYLE ORIGINALS

#500

BROWN



A Blundstone legend. Our Original #500 combines ultimate comfort with modern versatility. Built to go wherever life takes you, it's tough, iconic and looks great with just about anything.

- Premium water-resistant full grain leather
- Iconic elastic side
- Contoured EVA footbed for maximum comfort
- Lightweight and heat resistant TPU outsole
- XRD® Technology in the heel for supreme shock absorption
- Steel shank

UK SIZES

WOMEN / MEN

3 - 13 3.5 - 10.5

CATEGORY
CORELEAD TIME
8 WEEKS



LIFESTYLE **ORIGINALS**#**510****BLACK**

Sturdy and straightforward, the #510 is proof that simplicity never goes out of style.

- Premium water-resistant full grain leather
- Iconic elastic side
- Contoured EVA footbed for maximum comfort
- Lightweight and heat resistant TPU outsole
- XRD® Technology in the heel for supreme shock absorption
- Steel shank

UK SIZES

WOMEN / MEN

3 - 13 3.5 - 10.5CATEGORY
CORELEAD TIME
8 WEEKS

LIFESTYLE **ORIGINALS**#**2500**

BROWN/CRIMSON

NEW

Crimson elastics bring a bright splash of colour to the #2500 Originals.

- Premium water-resistant full grain leather
- Unlined
- Washable Comfort Lite footbed
- Lightweight and heat resistant TPU outsole
- Polyurethane midsole
- XRD® Technology in the heel for supreme shock absorption
- Steel shank

UK SIZES

WOMEN / MEN

3 - 9 3.5 - 10.5CATEGORY
SMULEAD TIME
16 WEEKS

LIFESTYLE **ORIGINALS**

#**2501**

BROWN/TOFFEE

NEW



The #2501 features a full grain brown leather and rich toffee coloured elastics making it a neutral wardrobe staple.

- Premium water-resistant full grain leather
- Unlined
- Washable Comfort Lite footbed
- Lightweight and heat resistant TPU outsole
- Polyurethane midsole
- XRD® Technology in the heel for supreme shock absorption
- Steel shank

UK SIZES

WOMEN / MEN

3 - 9 3.5 - 10.5

CATEGORY
SMU

LEAD TIME
16 WEEKS



LIFESTYLE **ORIGINALS**#**1409****BROWN/STRIPES**

Stripes are always in style. The #1409 combines our premium brown leather upper with a multi-coloured elastic.

- Premium water-resistant full grain leather
- Iconic elastic side
- Contoured EVA footbed for maximum comfort
- Lightweight and heat resistant TPU outsole
- XRD® Technology in the heel for supreme shock absorption
- Steel shank

UK SIZES

WOMEN / MEN

3 - 9 3.5 - 8.5CATEGORY
CORELEAD TIME
8 WEEKS



LIFESTYLE **ORIGINALS**#**519****BROWN/OLIVE**

The earthy olive elastic of the #519 adds natural colour to our Original 500 design.

- Premium water-resistant full grain leather
- Iconic elastic side
- Contoured EVA footbed for maximum comfort
- Lightweight and heat resistant TPU outsole
- XRD® Technology in the heel for supreme shock absorption
- Steel shank

UK SIZES

WOMEN / MEN

3 - 13 3.5 - 10.5CATEGORY
SMULEAD TIME
16 WEEKS



LIFESTYLE **ORIGINALS**#**2115****BLACK**

The lightweight and breathable #2115 is classic Blundstone style made with vegan verified materials.

- Upper material is onMicro® water-resistant vegan verified microfibre
- Lining is onSteam® 100% breathable vegan verified microfibre with antibacterial and antimicrobial features with complete dryness
- Durable and high resistance to abrasion, tested to 150,000 flex cycles
- Comfort Lite vegan footbed
- Lightweight and heat resistant TPU outsole
- Vegan verified XRD® Technology in the heel for superior shock absorption
- Steel shank

UK SIZES

WOMEN / MEN

3 - 13 3.5 - 10.5CATEGORY
SMULEAD TIME
16 WEEKS



LIFESTYLE **ORIGINALS**#**2116****BROWN**

Made with vegan verified materials, the #2116 is a new take on our ever popular chelsea boot.

- Upper material is onMicro® water-resistant vegan verified microfibre
- Lining is onSteam® 100% breathable vegan verified microfibre with antibacterial and antimicrobial features with complete dryness
- Durable and high resistance to abrasion, tested to 150,000 flex cycles
- Comfort Lite vegan footbed
- Lightweight and heat resistant TPU outsole
- Vegan verified XRD® Technology in the heel for superior shock absorption
- Steel shank

UK SIZES

WOMEN / MEN

3 - 13 3.5 - 10.5CATEGORY
SMULEAD TIME
16 WEEKS

LIFESTYLE **ORIGINALS**#**2423****DARK OLIVE**

Stand out from the crowd in the unique #2423 clog featuring an olive green upper.

- Premium water-resistant waxed suede leather
- Cosmo recycled material lining
- Washable Comfort Lite footbed
- Lightweight and heat resistant TPU outsole
- Polyurethane midsole
- XRD® Technology in the heel for supreme shock absorption
- Steel shank

UK SIZES

WOMEN / MEN

3 - 13**3.5 - 10.5**CATEGORY
SMULEAD TIME
16 WEEKS



LIFESTYLE **ORIGINALS**#**2421****ANTIQUE BROWN**

The simple design of the #2421, coupled with its antique brown leather finish, effortlessly blends fashion and function, offering a versatile choice for any season.

- Premium water-resistant waxed full grain leather
- Cosmo recycled material lining
- Washable Comfort Lite footbed
- Lightweight and heat resistant TPU outsole
- Polyurethane midsole
- XRD® Technology in the heel for supreme shock absorption
- Steel shank

UK SIZES

WOMEN / MEN

3 - 13**3.5 - 10.5**CATEGORY
SMULEAD TIME
16 WEEKS



LIFESTYLE **ORIGINALS**#**2422**

CLAY



This is as natural finish colour/ material to reflect a pre-worn finish. This has light rub and scuff marks to reflect the pre-worn finish which is the key feature of this leather and not a defect.

Slip into the #2422—these clogs feature a Comfort Lite footbed that cushions every step.

- Premium water-resistant waxed nubuck leather
- Cosmo recycled material lining
- Washable Comfort Lite footbed
- Lightweight and heat resistant TPU outsole
- Polyurethane midsole
- XRD® Technology in the heel for supreme shock absorption
- Steel shank

UK SIZES

WOMEN / MEN

3 - 13**3.5 - 10.5**CATEGORY
SMULEAD TIME
16 WEEKS

CLASSICS

Our Classics Series boots are built for thrill seekers, explorers, and those who appreciate the beauty that comes from wandering off the beaten track.

For 25/26 we've introduced a brushed leather in an antique zinc colourway, as well as a new style featuring a fashionable utilitarian double stitched toe cap.



LIFESTYLE **CLASSICS**#**2540**

CLARET

NEW

Oiled full grain leather in claret are a feature of the #2540, providing a timeless and elegant look.

- Premium water-resistant oiled full grain leather
- Leather and synthetic lining
- Contoured EVA footbed with XRD® Technology for maximum comfort
- TPU Classic #550 outsole with XRD® heel insert
- Polyurethane midsole
- XRD® Technology in the heel for supreme shock absorption
- Steel shank

UK SIZES

WOMEN / MEN

3 - 13**3.5 - 10.5**CATEGORY
SMULEAD TIME
16 WEEKS

LIFESTYLE **CLASSICS**#**2544**

TEAK

NEW

A soft nubuck leather outer in teak and leather lining give the #2544 elevated style and substance.

- Premium water-resistant oiled nubuck leather
- Leather and synthetic lining
- Contoured EVA footbed with XRD® Technology for maximum comfort
- TPU Classic #550 outsole with XRD® heel insert
- Polyurethane midsole
- XRD® Technology in the heel for supreme shock absorption
- Steel shank

UK SIZES

WOMEN / MEN

3 - 13**3.5 - 10.5**CATEGORY
SMULEAD TIME
16 WEEKS

LIFESTYLE **CLASSICS**#**2440****VINTAGE BROWN**

This genuine “brushed” leather is to reflect a Vintage/Pre-worn look showcasing the undercoat colour. Overtime the top layer may show flex and scuff marks revealing more of the undercoat colour.

This material requires damp cloth for cleaning only. Polish & creams will remove the top coating.

A timeless blend of classic style and modern comfort—the #2440 is designed with character.

- Premium water-resistant brushed leather
- Leather and synthetic lining
- Contoured EVA footbed with XRD® Technology for maximum comfort
- TPU Classic *550 outsole with XRD heel insert
- Polyurethane midsole
- Double stitching on the upper for extra strength
- XRD® in the heel for supreme shock absorption
- Steel shank

UK SIZES

WOMEN / MEN

3 - 13**3.5 - 10.5**CATEGORY
SMULEAD TIME
16 WEEKS



LIFESTYLE **CLASSICS**#**2446**

CLAY



This is as natural finish colour/ material to reflect a pre-worn finish. This has light rub and scuff marks to reflect the pre-worn finish which is the key feature of this leather and not a defect.

Featuring water-resistant leather, the #2446 with a pre-worn clay finish adds a touch of sophistication to your look and a whole lot of longevity.

- Premium water-resistant waxed nubuck leather
- Leather and synthetic lining
- Contoured EVA footbed with XRD® Technology for maximum comfort
- TPU Classic #550 outsole with XRD heel insert
- Polyurethane midsole
- Double stitching on the upper for extra strength
- XRD® in the heel for supreme shock absorption
- Steel shank

UK SIZES

WOMEN / MEN

3 - 13**3.5 - 10.5**CATEGORY
SMULEAD TIME
16 WEEKS

LIFESTYLE **CLASSICS**#**2340****BROWN**

With double stitching on the upper for increased durability, the #2340 is functional and stylish with a rich brown nubuck leather upper.

- Premium water-resistant nubuck leather
- Leather and synthetic lining
- Contoured EVA footbed with XRD® Technology for maximum comfort
- Lightweight and heat resistant TPU outsole
- Polyurethane midsole
- Double stitching on the upper for extra strength
- XRD® in the heel for supreme shock absorption
- Steel shank

UK SIZES

WOMEN / MEN

3 - 13**3.5 - 10.5**CATEGORY
SMULEAD TIME
16 WEEKS

LIFESTYLE **CLASSICS**
#2345

BROWN



The rich brown upper of the #2345 is perfect for a rustic, earthy look.

- Premium water-resistant nubuck leather
- Leather and synthetic lining
- Contoured EVA footbed with XRD® Technology for maximum comfort
- Lightweight and heat resistant TPU outsole
- Polyurethane midsole
- Double stitching on the upper for extra strength
- XRD® in the heel for supreme shock absorption
- Steel shank

UK SIZES

WOMEN / MEN

3 - 13

3.5 - 10.5

CATEGORY
SMU

LEAD TIME
16 WEEKS

LIFESTYLE **CLASSICS**#**558****BLACK**

Elegant and timeless with a black leather upper, the #558 is class and comfort built into one.

- Premium water-resistant full grain leather
- Leather and synthetic lining
- Contoured EVA footbed with XRD® Technology for maximum comfort
- Lightweight and heat resistant TPU outsole
- Double stitching on the upper for extra strength
- XRD® in the heel for supreme shock absorption
- Steel shank

UK SIZES

WOMEN / MEN

3 - 13**3.5 - 10.5**CATEGORY
CORELEAD TIME
8 WEEKS

LIFESTYLE **CLASSICS**#**550****WALNUT**

Our Original 500 style turned up to the max. The #550 combines our legendary durability with premium comfort features.

- Premium water-resistant full grain leather
- Leather and synthetic lining
- Contoured EVA footbed with XRD® Technology for maximum comfort
- Lightweight and heat resistant TPU outsole
- Double stitching on the upper for extra strength
- XRD® in the heel for supreme shock absorption
- Steel shank

UK SIZES

WOMEN / MEN

3 - 13**3.5 - 10.5**CATEGORY
CORELEAD TIME
8 WEEKS



LIFESTYLE **CLASSICS**#**585****RUSTIC BROWN**

The #585 has a supple rustic brown leather upper and leather lining for the ultimate in classic style and comfort.

- Premium water-resistant waxed nubuck leather
- Leather and synthetic lining
- Lightweight and heat resistant TPU outsole
- Contoured EVA footbed with XRD® Technology for maximum comfort
- Double stitching on the upper for extra strength
- XRD® in the heel for supreme shock absorption
- Steel shank

UK SIZES

WOMEN / MEN

3 - 13**3.5 - 10.5**CATEGORY
CORELEAD TIME
8 WEEKS

LIFESTYLE **CLASSICS**#**587****RUSTIC BLACK**

Combining a soft rustic black leather upper and our famous comfort features, the #587 is perfect for everywhere life takes you.

- Premium water-resistant waxed nubuck leather
- Leather and synthetic lining
- Contoured EVA footbed with XRD® Technology for maximum comfort
- Lightweight and heat resistant TPU outsole
- Double stitching on the upper for extra strength
- XRD® in the heel for supreme shock absorption
- Steel shank

UK SIZES

WOMEN / MEN

3 - 13**3.5 - 10.5**CATEGORY
CORELEAD TIME
8 WEEKS



LIFESTYLE **CLASSICS**#**1609****ANTIQUE BROWN**

The timeless antique brown leather upper of the #1609 just gets better with age.

- Premium water-resistant waxed full grain leather
- Leather and synthetic lining
- Contoured EVA footbed with XRD® Technology for maximum comfort
- Lightweight and heat resistant TPU outsole
- Double stitching on the upper for extra strength
- XRD® in the heel for supreme shock absorption
- Steel shank

UK SIZES

WOMEN / MEN

3 - 13**3.5 - 10.5**CATEGORY
CORELEAD TIME
8 WEEKS

LIFESTYLE **CLASSICS**#**2443**

BLACK



Brogue



The #2443 is a step up with unique brogue detailing on the upper. These add a touch of flare to our iconic Classics.

- Premium water-resistant full grain leather
- Leather and synthetic lining
- Contoured EVA footbed with XRD® Technology for maximum comfort
- TPU Classic #550 outsole with XRD heel insert
- Polyurethane midsole
- Double stitching on the upper for extra strength
- XRD® in the heel for supreme shock absorption
- Steel shank

UK SIZES

WOMEN / MEN

3 - 13**3.5 - 10.5**CATEGORY
SMULEAD TIME
16 WEEKS



LIFESTYLE **CLASSICS**#**2444**

ANTIQUE BROWN



Brogue



Stride the streets with comfort in our Classics #2444 featuring shock absorption XRD® Technology in both the heel of the boot and the footbed.

- Premium water-resistant waxed full grain leather
- Leather and synthetic lining
- Contoured EVA footbed with XRD® Technology for maximum comfort
- TPU Classic #550 outsole with XRD heel insert
- Polyurethane midsole
- Double stitching on the upper for extra strength
- XRD® in the heel for supreme shock absorption
- Steel shank

UK SIZES

WOMEN / MEN

3 - 13**3.5 - 10.5**CATEGORY
SMULEAD TIME
16 WEEKS

THERMAL

While all our boots are sturdy and comfortable, our Thermal Series takes it to the next level.

Built with waterproof* leather and plenty of cutting-edge technology, they keep the warmth in, and the moisture and cold out.

They're built for those who use their boots for hard work in all weather conditions – but also want to look good while they're doing it.



LIFESTYLE **THERMAL**#**566****BLACK**

Toasty and tough, winter is no match for the #566. These thermal boots will keep your feet warm through the cold season with their sturdy design.

- Premium waterproof* full grain leather
- Tight-knit coated elastic with sealed latex seams
- Thinsulate® and leather lining - traps body heat while allowing moisture to escape
- Contoured EVA footed with XRD® Technology and sheepswool lining for maximum warmth and comfort
- XRD® in the heel for supreme shock absorption
- Steel shank

UK SIZES

WOMEN / MEN

3 - 12**3.5 - 10.5**CATEGORY
CORELEAD TIME
8 WEEKS

XRD® is a registered trademark of Rogers Corporation.

*Leathers referred to as waterproof are routinely tested for resistance to water penetration up to 12,000 / 15,000 flexes using one of the following SATRA test methods: TM171 using SATRA STM 703 Ballypenetrometer (or equivalent) or TM34 using SATRA STM 606D Maeser type WR tester (or equivalent).



LIFESTYLE **THERMAL**#**584****RUSTIC BROWN**

Winter is no match for the #584.
We've paired our classic aesthetic with
sheepswool footbed for all day style and
comfort, no matter what the weather.

- Premium waterproof* waxed nubuck leather
- Tight-knit coated elastic with sealed latex seams
- Thinsulate® and leather lining - traps body heat while allowing moisture to escape
- Contoured EVA footbed with XRD® Technology and sheepswool lining for maximum warmth and comfort
- XRD® in the heel for supreme shock absorption
- Steel shank

UK SIZES

WOMEN / MEN

3 - 12**3.5 - 10.5**CATEGORY
CORELEAD TIME
8 WEEKS

XRD® is a registered trademark of Rogers Corporation.

*Leathers referred to as waterproof are routinely tested for resistance to water penetration up to 12,000 / 15,000 flexes using one of the following SATRA test methods: TM171 using SATRA STM 703 Ballypenetrometer (or equivalent) or TM34 using SATRA STM 606D Maeser type WR tester (or equivalent).

LIFESTYLE **THERMAL**#**1477****ANTIQUE BROWN**

With a sheepwool footbed and Thinsulate® thermal lining, the #1477 is the perfect accompaniment for those chilly winter days.

- Premium waterproof* waxed full grain leather
- Tight-knit coated elastic with sealed latex seams
- Thinsulate® and leather lining - traps body heat while allowing moisture to escape
- Contoured EVA footbed with XRD® Technology and sheepswool lining for maximum warmth and comfort
- XRD® in the heel for supreme shock absorption
- Steel shank


UK SIZES

WOMEN / MEN

3 - 12**3.5 - 10.5**CATEGORY
SMULEAD TIME
16 WEEKS

XRD® is a registered trademark of Rogers Corporation.

*Leathers referred to as waterproof are routinely tested for resistance to water penetration up to 12,000 / 15,000 flexes using one of the following SATRA test methods: TM171 using SATRA STM 703 Ballypenetrometer (or equivalent) or TM34 using SATRA STM 606D Maeser type WR tester (or equivalent).

A woman with voluminous curly hair is walking on a concrete bridge. She is wearing a long, quilted olive-green jacket over a bright green turtleneck, and blue denim jeans. She is carrying a black bag in her left hand. The bridge has a metal railing and concrete pillars. The lighting is dramatic, with strong shadows cast across the ground.

LUG BOOT COLLECTION

As a unisex brand, Blundstone has always embraced utilitarian function coupled with iconic style.

This collection combines our timelines design and materials in a way that is fit for today's trendsetters.

Using our Originals chelsea upper and a traditional deep ridge lug sole that has proven it's success in our Work and Safety boots, the Lug Boot Collection is sure to catch the eye of consumers everywhere.



LIFESTYLE **LUG BOOT COLLECTION**#**2240****BLACK**

The Lug Boot sole's deep grooves are designed specifically to increase traction, making the #2240 in premium black leather a sophisticated option that can handle any environment.

- Premium water-resistant full grain leather
- Leather and synthetic lining
- Comfort Arch footbed with XRD® Technology for maximum comfort
- Lug sole (rubber) with deep grooves designed specifically to increase slip-resistance in varied environments
- Polyurethane midsole
- XRD® in the heel for supreme shock absorption
- Steel shank

UK SIZES

WOMEN / MEN

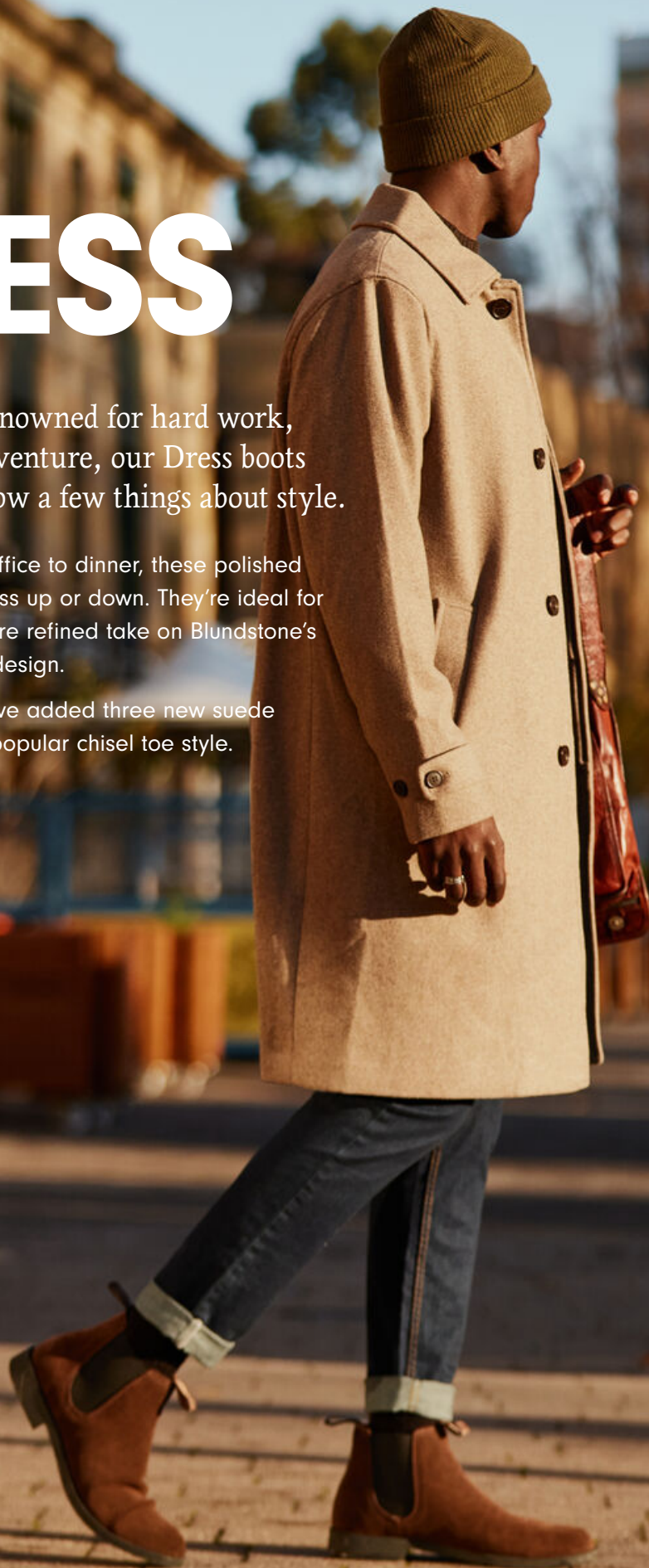
3 - 13**3.5 - 10.5**CATEGORY
CORELEAD TIME
8 WEEKS

DRESS

Blundstone are renowned for hard work, durability and adventure, our Dress boots prove we also know a few things about style.

Taking you from the office to dinner, these polished boots are easy to dress up or down. They're ideal for those who want a more refined take on Blundstone's trademark utilitarian design.

For Season 25/26 we've added three new suede offerings to our ever-popular chisel toe style.



LIFESTYLE **DRESS**

#**2391**

BROWN

NEW



Dressed up or down, the brown suede #2391 is the perfect day to night boot.

- Premium water repellent suede leather
- Leather and synthetic lining
- Contoured EVA footbed with XRD® Technology for maximum comfort
- Lightweight and abrasion-resistant polyurethane mid and outsole
- Steel shank

UK SIZES

WOMEN / MEN

5 - 12

5.5 - 10.5

CATEGORY
SMU

LEAD TIME
16 WEEKS

LIFESTYLE **DRESS**#**1901****BLACK**

The #1901 features a premium quality black leather upper and tailored toe shape, providing the Blundstone-lover with a sophisticated dress boot option.

- Premium water-resistant full grain leather
- Leather and synthetic lining
- Contoured EVA footbed with XRD® Technology for maximum comfort
- Lightweight and abrasion-resistant polyurethane mid and outsole
- Steel shank

UK SIZES

WOMEN / MEN

5 - 12**5.5 - 10.5**CATEGORY
SMULEAD TIME
16 WEEKS



LIFESTYLE **DRESS**#**2029**

ANTIQUE BROWN



The fast growing favourite antique brown leather upper gives warmth and depth to the #2029 Dress boot while maintaining its sharp classic silhouette.

- Premium water-resistant waxed full grain leather
- Leather and synthetic lining
- Contoured EVA footbed with XRD® Technology for maximum comfort
- Lightweight and heat resistant TPU outsole
- Polyurethane midsole
- XRD® Technology in the heel for supreme shock absorption
- Steel shank

UK SIZES

WOMEN / MEN

3 - 12**3.5 - 10.5**CATEGORY
CORELEAD TIME
8 WEEKS



LIFESTYLE **DRESS**#**1306****RUSTIC BROWN**

The rustic brown leather upper of the #1306 gives this Dress boot a down to earth appeal.

- Premium water-resistant waxed nubuck leather
- Leather and synthetic lining
- Contoured EVA footbed for maximum comfort
- Lightweight and heat resistant TPU outsole
- Polyurethane midsole
- XRD® Technology in the heel for supreme shock absorption
- Steel shank

UK SIZES

WOMEN / MEN

3 - 12**3.5 - 10.5**CATEGORY
CORELEAD TIME
8 WEEKS

LIFESTYLE **DRESS**#**1308****RUSTIC BLACK**

Polish meets supreme comfort. Sleek on the foot and sturdy on the pavement, the rustic black #1308 is stylish everywhere you go.

- Premium water-resistant waxed nubuck leather
- Leather and synthetic lining
- Contoured EVA footbed for maximum comfort
- Lightweight and heat resistant TPU outsole
- Polyurethane midsole
- XRD® Technology in the heel for supreme shock absorption
- Steel shank

UK SIZES

WOMEN / MEN

3 - 12**3.5 - 10.5**CATEGORY
CORELEAD TIME
8 WEEKS



LIFESTYLE **DRESS**#**068*****BLACK**

Where form meets function. A lean profile and a square toe make the #063 the perfect boots for the paddock or town.

- Premium water-resistant full grain leather
- Contoured EVA footbed for maximum comfort
- Lightweight and heat resistant TPU outsole
- Polyurethane midsole
- XRD® Technology in the heel for supreme shock absorption
- Steel shank

*Leather Lined 16 Week Lead Time.

XRD® is a registered trademark of Rogers Corporation.

UK SIZES

WOMEN / MEN

3 - 12**3.5 - 10.5**CATEGORY
CORELEAD TIME
8 WEEKS

LIFESTYLE **DRESS**

#067*

BROWN



Perfect for the city slicker or urban wanderer, our #062's chisel toe and soft underfoot comfort provide all day style.

- Premium water-resistant full grain leather
- Contoured EVA footbed for maximum comfort
- Lightweight and heat resistant TPU outsole
- Polyurethane midsole
- XRD® Technology in the heel for supreme shock absorption
- Steel shank

*Leather Lined, 16 Week Lead Time.

XRD® is a registered trademark of Rogers Corporation.

UK SIZES

WOMEN / MEN

3 - 12

3.5 - 10.5

CATEGORY
CORE

LEAD TIME
8 WEEKS



WOMEN'S SERIES

Our Women's Series updates the classic Blundstone look with a sleek design and contoured feminine fit.

For 25/26 we've introduced four new colourways to our ever-popular 5cm high heel style.

LIFESTYLE **WOMEN'S SERIES**#**2365****BLACK**

Featuring a 7.5cm heel and sleek black water-resistant leather upper, the #2365 provides height and style without compromising on comfort and durability.

- Premium water-resistant full grain leather
- Leather and synthetic lining
- Ortholite footbed with XRD® Technology for maximum comfort and supreme shock absorption
- Polyurethane outsole
- Moulded shank

UK SIZES**WOMEN****3 - 8****3.5 - 7.5**CATEGORY
SMULEAD TIME
16 WEEKS



LIFESTYLE **WOMEN'S SERIES**#**1671****BLACK**

Black is the new black. The #1671 provides height and style without compromising on comfort or durability.

- Premium water-resistant full grain leather
- Leather and synthetic lining
- Classic Comfort Contoured EVA footbed with XRD® Technology for maximum comfort and supreme shock absorption
- Polyurethane outsole
- Steel shank

UK SIZES

WOMEN

3 - 8**3.5 - 7.5**CATEGORY
CORELEAD TIME
8 WEEKS



LIFESTYLE **WOMEN'S SERIES**

#**1673**

ANTIQUE BROWN



The #1673 combines antique brown leather with a sleek design and sturdy heel for the epitome of earthy chic.

- Premium water-resistant waxed full grain leather
- Leather and synthetic lining
- Classic Comfort Contoured EVA footbed with XRD® Technology for maximum comfort and supreme shock absorption
- Polyurethane outsole
- Steel shank

UK SIZES

WOMEN

3 - 8

3.5 - 7.5

CATEGORY
CORE

LEAD TIME
8 WEEKS



LIFESTYLE **ORIGINALS**#**2151**

ANTIQUE BROWN



Antique brown colour, timelessly stylish design. This is a sturdy boot that will keep you looking good for years to come.

- Premium water-resistant waxed full grain leather
- Leather and synthetic lining
- Contoured EVA footbed for maximum comfort
- XRD® Technology in the heel for supreme shock absorption
- Lightweight and heat resistant TPU outsole
- Steel shank

UK SIZES

WOMEN

3 - 8 3.5 - 7.5CATEGORY
SMULEAD TIME
16 WEEKS



LIFESTYLE **ORIGINALS**#**1448****BLACK**

High cut and refined, the #1448 high-top is sophisticated and chic while still featuring all our classic comfort features.

- Premium water-resistant full grain leather
- Leather and synthetic lining
- Contoured EVA footbed for maximum comfort
- XRD® Technology in the heel for supreme shock absorption
- Lightweight and heat resistant TPU outsole
- Steel shank

UK SIZES

WOMEN

3 - 8 3.5 - 7.5CATEGORY
SMULEAD TIME
16 WEEKS



LIFESTYLE **ORIGINALS**#**1352****SHIRAZ**

Comfort above all else, but with just the right touch of flair. The #1352 high-top is perfect for the office or heading out with friends.

- Premium water-resistant full grain leather
- Leather and synthetic lining
- Contoured EVA footbed for maximum comfort
- XRD® Technology in the heel for supreme shock absorption
- Lightweight and heat resistant TPU outsole
- Steel shank

UK SIZES

WOMEN

3 - 8 3.5 - 7.5CATEGORY
SMULEAD TIME
16 WEEKS

KIDS'

Playtime can be hard work — but our Kids Series is up to the challenge.

For 25/26 we've introduced five new products including nubuck and waxed suede and pops of coloured elastic for our little adventurers.



LIFESTYLE **KIDS**#**2590**

BROWN/CRIMSON

NEW

A brown leather upper, and a contrasting deep crimson elastic make the #2590 a bold choice for little adventurers.

- Premium water-resistant full grain leather
- Synthetic lining
- Contoured EVA footbed for maximum comfort and breathability
- Multi-fit cambrelle footbed insert
- Lightweight and abrasion-resistant polyurethane outsole
- Polyurethane midsole
- Steel shank

UK SIZES
8 - 13 1 - 3CATEGORY
SMULEAD TIME
16 WEEKS

LIFESTYLE **KIDS**#**2591**

BROWN/TOFFEE

NEW

Designed for little explorers, these boots combine water-resistant leather and a lightweight outsole for all-day play.

- Premium water-resistant full grain leather
- Synthetic lining
- Contoured EVA footbed for maximum comfort and breathability
- Multi-fit cambrelle footbed insert
- Lightweight and abrasion-resistant polyurethane outsole
- Polyurethane midsole
- Steel shank

UK SIZES
8 - 13 1 - 3CATEGORY
SMULEAD TIME
16 WEEKS

LIFESTYLE **KIDS**#**2592**

SHIRAZ

NEW

The #2592 Kids boot in shiraz brings a pop of fun colour to the playground.

- Premium water-resistant full grain leather
- Synthetic lining
- Contoured EVA footbed for maximum comfort and breathability
- Multi-fit cambrelle footbed insert
- Lightweight and abrasion-resistant polyurethane outsole
- Polyurethane midsole
- Steel shank

UK SIZES
8 - 13 1 - 3CATEGORY
SMULEAD TIME
16 WEEKS

LIFESTYLE **KIDS**#**2594**

STEEL GREY

NEW

With an abrasion-resistant outsole and water-resistant waxed suede leather, the #2594 are ready for kids rough and tumble.

- Premium water-resistant waxed suede leather
- Synthetic lining
- Contoured EVA footbed for maximum comfort and breathability
- Multi-fit cambrelle footbed insert
- Lightweight and abrasion-resistant polyurethane outsole
- Polyurethane midsole
- Steel shank

UK SIZES
8 - 13 1 - 3CATEGORY
SMULEAD TIME
16 WEEKS

LIFESTYLE **KIDS**#**1413****BROWN/STRIPES**

A fun, multi-coloured stripe elastic adds a touch of vibrancy to the #1413.

- Premium water-resistant full grain leather
- Novelty elastic
- Leather and synthetic lining
- Contoured EVA footbed for maximum comfort and breathability
- Multi-fit cambrelle footbed insert
- Lightweight and abrasion-resistant polyurethane outsole
- Polyurethane midsole
- Steel shank

UK SIZES
8 - 13 1 - 3CATEGORY
SMULEAD TIME
16 WEEKS

LIFESTYLE **KIDS**#**2394****BROWN/OLIVE**

With premium water-resistant leather and olive elastic gussets, the #2394 is sturdy and ready for adventures.

- Premium water-resistant full grain leather
- Synthetic lining
- Contoured EVA footbed for maximum comfort and breathability
- Multi-fit cambrelle footbed insert
- Lightweight and abrasion-resistant polyurethane outsole
- Polyurethane midsole
- Steel shank

UK SIZES
8 - 13 1 - 3CATEGORY
SMULEAD TIME
16 WEEKS

LIFESTYLE **KIDS**

#**2395**

BROWN/BUTTERFLY LILAC



- Premium water-resistant leather
- Cotton lining
- Contoured EVA footbed for maximum comfort and breathability
- Multi-fit cambrelle footbed insert
- Lightweight and abrasion-resistant polyurethane outsole
- Polyurethane midsole
- Steel shank

UK SIZES
8 - 13 1 - 3

CATEGORY
SMU

LEAD TIME
16 WEEKS

LIFESTYLE **KIDS**#**580****BLACK/BLUE**

A blue elastic gives the #580 an unique point of difference.

- Premium water-resistant full grain leather
- Leather and synthetic lining
- Contoured EVA footbed for maximum comfort and breathability
- Multi-fit cambrelle footbed insert
- Lightweight and abrasion-resistant polyurethane outsole
- Polyurethane midsole
- Steel shank

UK SIZES
8 - 13 1 - 3CATEGORY
SMULEAD TIME
16 WEEKS

LIFESTYLE **KIDS**#**1468****ANTIQUE BROWN**

With a tartan lining and antique brown leather, the #1468 is a comfortable and durable option for the junior explorer.

- Premium water-resistant full grain leather
- Synthetic lining
- Contoured EVA footbed for maximum comfort and breathability
- Multi-fit cambrelle footbed insert
- Lightweight and abrasion-resistant polyurethane outsole
- Polyurethane midsole
- Steel shank

UK SIZES
8 - 13 1 - 3CATEGORY
SMULEAD TIME
16 WEEKS

LIFESTYLE **KIDS**#**1325****RUSTIC BLACK**

Classic style and practicality
make a great pair for the #1325.

- Premium water-resistant waxed nubuck leather
- Leather and synthetic lining
- Contoured EVA footbed for maximum comfort and breathability
- Multi-fit cambrelle footbed insert
- Lightweight and abrasion-resistant polyurethane outsole
- Polyurethane midsole
- Steel shank

UK SIZES
8 - 13 1 - 3CATEGORY
SMULEAD TIME
16 WEEKS



LIFESTYLE **KIDS**#**2496****DARK OLIVE**

Take a hint of the forest with you wherever you go in the #2496 Kids' Series boots with dark olive waxed suede leather

- Premium water-resistant waxed suede leather
- Cotton lining
- Contoured EVA footbed for maximum comfort and breathability
- Multi-fit cambrelle footbed insert
- Lightweight and abrasion-resistant polyurethane outsole
- Polyurethane midsole
- Steel shank

UK SIZES
8 - 13 1 - 3CATEGORY
SMULEAD TIME
16 WEEKS

LIFESTYLE **KIDS**#**565****RUSTIC BROWN**

Cut from the same cloth as our Classic 550, the #565 is a family icon made for the young one in yours.

- Premium water-resistant waxed nubuck leather
- Leather and synthetic lining
- Contoured EVA footbed for maximum comfort and breathability
- Multi-fit cambrelle footbed insert
- Lightweight and abrasion-resistant polyurethane outsole
- Polyurethane midsole
- Steel shank

UK SIZES
8 - 13 1 - 3CATEGORY
CORELEAD TIME
8 WEEKS

LIFESTYLE **KIDS**

#**530**

BROWN



Cut from the same cloth as our Classic 550, the #530 is a family icon made for the young one in yours.

- Premium water-resistant leather
- Leather lining
- Contoured EVA footbed for maximum comfort and breathability
- Multi-fit cambrelle footbed insert
- Lightweight and abrasion-resistant polyurethane outsole
- Polyurethane midsole
- Steel shank

UK SIZES
8 - 13 1 - 3

CATEGORY
CORE

LEAD TIME
8 WEEKS

LIFESTYLE **KIDS**

#**531**

BLACK



The #531 works with all outfits, in all settings.
Comfort guaranteed, quality assured.

- Premium water-resistant full grain leather
- Leather and synthetic lining
- Contoured EVA footbed for maximum comfort and breathability
- Multi-fit cambrelle footbed insert
- Lightweight and abrasion-resistant polyurethane outsole
- Polyurethane midsole
- Steel shank

UK SIZES
8 - 13 1 - 3

CATEGORY
CORE

LEAD TIME
8 WEEKS

WORK & SAFETY

All Blundstone boots are engineered to provide the wearer with a comfortable experience, ready to face a long day on the job. Our different boots feature different comfort systems, ensuring there is a boot suitable for everyone, in all kinds of environments.

They're the boots that work overtime, and with breathable upper materials and quality linings, there's comfort in every step.





WORK & SAFETY **SAFETY**#**910**

CES3 BLACK



The #910 is a boot you can depend on.
It's fitted with a water resistant upper,
TPU bump cap and a luxury Comfort Arch
Footbed giving you cushioning support all day.

- Platinum quality water-resistant leather
- Rubber outsole
- Polyurethane midsole
- Luxury Comfort Arch PU footbed with XRD® Technology forepart insert

UK SIZES

WOMEN MEN

5 - 13 6.5 - 10.5CATEGORY
CORELEAD TIME
8 WEEKS

CERTIFIED TO:
ISO 20345:2011 Class I, Category S3
AS 2210.3:2019 Class I, Category S3
ASTM F2413-18
including Static Dissipative (SD Clause 5.7)



WORK & SAFETY **SAFETY**#**122**

CES3 BROWN



The #122 features a protective kick guard to protect the leather, along with a defined heel to keep you stable while climbing and descending ladders.

- Premium water-resistant oil tanned leather
- TPU outsole
- Polyurethane midsole
- Classic Comfort footbed with XRD® Technology forepart & heel inserts

UK SIZES

WOMEN MEN

3 - 13 5.5 - 10.5CATEGORY
CORELEAD TIME
8 WEEKS

CERTIFIED TO:
ISO 20345:2011 Class I, Category S3
AS 2210.3:2019 Class I, Category S3
ASTM F2413-18
including Static Dissipative (SD Clause 5.7)

WORK & SAFETY **SAFETY**#**192**

CE BROWN



This work boot checks all the safety boxes so you can focus on the job at hand. Blundstone protective steel toe safety and all-day comfort, even on concrete.

- Premium water-resistant oil tanned leather
- TPU outsole
- Polyurethane midsole
- Classic Comfort footbed with XRD® Technology forepart & heel inserts

UK SIZES

WOMEN MEN

5 - 13 6.5 - 10.5CATEGORY
CORELEAD TIME
8 WEEKS

CERTIFIED TO:
 ISO 20345:2011 Class I, Category SB
 AS 2210.3:2019 Class I, Category SB
 ASTM F2413-18 including
 Electrical Hazard Resistance (EH Clause 5.6)

WORK & SAFETY **SAFETY**

#196

WAXY RUSTIC BROWN LEATHER

Step confidently into your workday with Blundstone's #196 safety boots. They offer steel toe protection, slip resistance, and ergonomic design for safety and reduced fatigue.

- Waxy rustic brown leather elastic side safety boot
- Kick guard toe leather protection
- Classic Comfort footbed with XRD® Technology forepart & heel inserts providing greater comfort
- PU midsole and TPU 6mm tread outsole
 - excellent abrasion resistance
 - highly resistant to hydrolysis and microbial attack
 - oil, acid and organic fat resistant
 - outsole heat resistant to 140°C
- Ergonomically engineered toe spring for reduced wearer fatigue
- Steel shank—ensures correct step flex point, assists with torsional stability
- Full heel breast with arch support for ladder and gantry safety
- Broad fitting Type 1 steel toe cap tested to resist a 200 joule impact

UK SIZES

WOMEN MEN

4 - 13**5.5 - 10.5**CATEGORY
CORELEAD TIME
8 WEEKS

CERTIFIED TO:
ISO 20345:2022 Class I, Category SB
ASTM F2413-18 including
Electrical Hazard Resistance (EH Clause 5.6)

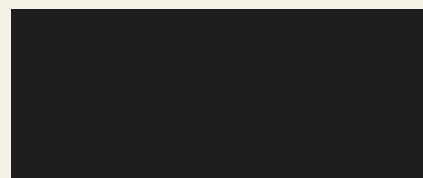


ANCILLARIES

We've got a selection of accessories to keep your boots like new, and your toes warm and toasty.

ANCILLARIES **RENOVATING CREAM****RENCRMBLK**

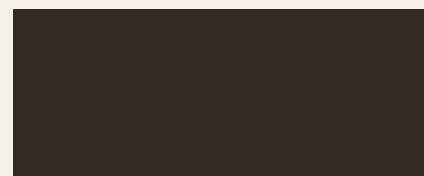
BLACK



Renovating cream that nourishes and conditions, preventing leather from drying out.

A heavily pigmented cream that is designed to help maintain the colour and finish of your favourite leather footwear.

SIZE
50ml**AMOUNT**
Pack of 6

ANCILLARIES **RENOVATING CREAM****RENCRMBRN****BROWN**

Renovating cream that nourishes and conditions, preventing leather from drying out.

A heavily pigmented cream that is designed to help maintain the colour and finish of your favourite leather footwear.

SIZE
50ml**AMOUNT**
Pack of 6

ANCILLARIES **RENOVATING CREAM****RENCRMCHY**

CHERRY



Renovating cream that nourishes and conditions, preventing leather from drying out.

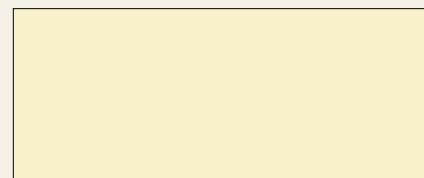
A heavily pigmented cream that is designed to help maintain the colour and finish of your favourite leather footwear.

SIZE
50ml**AMOUNT**
Pack of 6

ANCILLARIES RENOVATING CREAM

RENCRMRUS

RUSTIC



Renovating cream that nourishes and conditions, preventing leather from drying out.

A heavily pigmented cream that is designed to help maintain the colour and finish of your favourite leather footwear.

SIZE
50ml

AMOUNT
Pack of 6

ANCILLARIES **POLISHING PAD****POLNTLPAD**

NEUTRAL (CLEAR WAX FINISH)



Highly durable foam pad for leather conditioning and cleaning.

Provides an instant shine to leather footwear.
Handy take anywhere size.

SIZE
50ml

AMOUNT
Pack of 6

ANCILLARIES **WATERPROOF SPRAY****WTRSPRAY**NEUTRAL



A spray-on waterproofer formulated to protect all types of footwear from water and stains.

Doesn't affect the performance or breathability of footwear and is a fast drying formula. Suitable for use on all kinds of footwear, including nubuck, suede, and all leathers.

SIZE
125ml

AMOUNT
Pack of 12

ANCILLARIES **SHOE CARE KIT****SHOECAREKIT-BLK**

BLACK



Individual footwear care products contained in one shoe care kit.

MOQ
6

Contains

- Waterproof Spray
- Polishing Pad
- Renovating Cream (either Black, Brown or Rustic)
- Polishing cloth

ANCILLARIES **SHOE CARE KIT****SHOECAREKIT-BRN****BROWN**

Individual footwear care products contained in one shoe care kit.

MOQ
6

Contains

- Waterproof Spray
- Polishing Pad
- Renovating Cream (either Black, Brown or Rustic)
- Polishing cloth

RUSTIC



Individual footwear care products contained in one shoe care kit.

MOQ 6

- **Waterproof Spray**
- **Polishing Pad**
- **Renovating Cream (either Black, Brown or Rustic)**
- **Polishing cloth**

ANCILLARIES **FOOTBED****FBEDPREM**

COMFORT CLASSIC



Suitable for our Originals and Classics Series,
#122, #192 and CSA products.

UK SIZES

MEN

2-3 | 4-5 | 6-7 | 8-9**10-11 | 12-14**AMOUNT
PACK OF 1

ANCILLARIES **FOOTBED**

FBEDCA

COMFORT ARCH



Suitable for our Work & Safety boots.

UK SIZES

MEN

5-7 | 8-10 | 11-13

AMOUNT
PACK OF 1

ANCILLARIES **FOOTBED**

FBEDCOMAIR

COMFORT AIR



Suitable for our Active Series.

UK SIZES

MEN
5-7 | 8-10 | 11-13

AMOUNT
PACK OF 1

ANCILLARIES **FOOTBED**

FBEDSHE

SHEEPSKIN



Suitable for our Thermal Series.

UK SIZES

MEN
5-12

AMOUNT
PACK OF 1



Boot Care

While our boots are designed to last, caring for them is vital to help prolong their life and lustre.

Our boots are made from leathers with various finishes, suede, nubuck and fully vegan materials. Each needs specific care to keep them clean, as outlined below.

Leather

- First, remove any caked dirt with a soft-bristled brush or damp cloth, and leave the boots to air dry. Ensure boots are away from direct sunlight or heaters, as they will dry out the leather.
- Apply leather polish or cream to the leather to help maintain the boots. If using a polish for the first time, try it on an inconspicuous area of the boot to check whether it alters the colour or appearance.
- If using a polish, apply a small amount of leather cleaner to a polishing cloth or brush and rub it onto the boot in circular motions.
- Wipe away the residue and leave it to dry.

Suede leather

- Use a suede brush to scrub off any surface stains or dirt.
- Remove any scuff marks with a gum eraser. Rub the scuff with the eraser and wipe away the rubber debris.
- Then, dampen a suede brush with a little water and pour a small amount of suede and leather cleaner on it. Then, clean the shoe, focusing on any particularly stained spots. Dab the boots with a clean towel to remove any excess moisture and leave to air dry.
- Once dry, apply a water and stain-repellent spray on the shoe to help prolong its life. Some suedes are best treated prior to wear if they have yet to be treated.
- It's a good idea to waterproof boots regularly to protect the leather from staining. If the leather is wet, let it dry naturally before cleaning or using any cleaning substances.



Nubuck leather

- Use a dry nubuck cloth to remove any surface dirt. Then, brush gently with a nubuck brush. Use a circular motion, taking care not to spend more than a few seconds on any area.
- Remove any scuff marks with a gum eraser. Rub the scuff with the eraser and wipe away the rubber debris. Alternatively, try a spray-on nubuck cleaning solution, then wipe the area with a nubuck cloth. It is important to follow the instructions on such products and ensure it is tested on a small area before wider application.
- Dab the shoes with a clean towel to remove any excess moisture and leave to air dry.
- Apply nubuck water and stain repellent on the shoe to help prolong the life of your shoes.
- Remember, it's a good idea to waterproof boots regularly to protect the leather from staining. If the leather is wet, let it dry naturally before cleaning or using any cleaning substances.

Brushed leather

Brushed leathers are unlike traditional leathers. They are finished and coated with specialised films requiring different care and maintenance steps. Over time, the top layer may show flex and scuff marks, revealing more of the undercoat colour. This is normal procedure.

Abrasive cleaners such as wire or firm bushes, solvent or chemical-based liquid cleaners or excessive friction using abrasive cleaning agents or clothes will damage and remove the specialised films and must not be used. Coloured polish or crème should not be used.

For best cleaning and maintenance results:

- Excess dirt and grim should be gently removed using a soft, large, long-hair brush, taking care not to apply excessive force
- Stubborn dirt can be gently removed using a moistened cloth, taking care not to rub excessively
- Shine and lustre can be restored using a neutral gel creme sparingly and taking care not to rub excessively. Always test first at an inconspicuous area before applying to the whole boot.

Vegan

- Wipe boots clean with a damp cloth
- Leave boots to air dry away from direct sunlight or any heaters
- Remove and wash the footbed separately in mild soap and water and air dry flat

No creams are required as the upper material of our vegan boots is onMicro® microfibre.

